

38 years of experience in the hospitality sector with custom-made productions...



- *Printed*
- *Axminster*
- *Hand-Tufted*
- *Carpet Tile*





REFERENCES

- CASPLAN RIVIERA HOTEL KAZAKİSTAN *****
- WYNDHAM HOTEL
- SWISS GRAND EFES HOTEL
- AĖAOĖLU HOTEL - ULUDAĖ
- ARYA HOTELS GROUP - İRAN
- LAGOS HOTEL - NİJERYA
- HOLIDAY INN HOTEL
- FOUR SEASONS HOTEL 2
- ADENBEACH & EDEN GARDEN HOTEL
- CVK PARK BOSPHORUS - TAKSİM
- DEDEMAN HOTEL - GAZİANTEP
- MARTI HOTEL - TAKSİM
- RAMADA HOTELS - BAKÜ
- SHERATON HOTEL
- RADISSON BLU
- SUHAN HOTEL - KAPADOKYA
- HILTON HOTEL MALL OF İSTANBUL

- CUMHURBAŞKANI RECEP TAYYİP ERDOĖAN EVİ
- TAKSİM CAMİİ
- AZERBAIJAN CUMHURBAŞKANLIĖI SARAYI
- 1.AVRUPA OLİMPİYATL. SPOR SALONU / BAKÜ
- İ.M.K.B BORSA BİNASI
- RUAND KONGRE MERKEZİ
- TOPKAPI SARAYI
- TÜRKİYE JOKEY KULÜBÜ
- CEZAYİR GRAND MOSQUE / KAYI HOLDİNG
- CEZAYİR KONSOLOSLUĖU

- CLUB MED FRANSTZ TATİL KÖYÜ
- FENERBAĖE FARUK ILGAZ TEŞİSLERİ
- BJK. NEVZAT DEMİR TEŞİSLERİ
- ARKAS HOLDİNG
- TEKFEN HOLDİNG GENEL MÜDÜRLÜK
- PAŞABAĖE CAM FABRİKALARI

- İSTANBUL HAVALİMANI
- ATATÜRK HAVALİMANI / DHM
- İZMİR HAVALİMANI
- DHY DEVLET HAVA MEYDANI İŞLETMESİ
- BORAJET - SABİHA GÖKÇEN HAVAALANI OFİSİ
- SABİHA GÖKÇEN HAVAALANI

- GÜRCİSTAN TİFLİS BASKETBOL SALONU
- KOLEKSİYON MOBİLYA
- CUKUROVA TOWER
- BAKÜ - AZİNKO İŞ MERKEZİ
- YTONG GENEL MÜDÜRLÜK BİNASI
- FB ORDUEVİ GENERAL EVLERİ

- KAVACIK DOKTORLAR SİTESİ
- ALLEBEN GÖLETİ
- AL CEZİRE TÜRK / TV - CİNE 5 TV
- FENERBAĖE TV
- SHOW TV
- STAR TV

- BOĖAZİÇİ ÜNİVERSİTESİ
- İSTANBUL ÜNİVERSİTESİ
- MARMARA ÜNİVERSİTESİ
- T.C. MİMAR SİNAN G.S ÜNİVERSİTESİ
- İTÜ İSTANBUL TEKNİK ÜNİVERSİTESİ
- YILDIZ TEKNİK ÜNİVERSİTESİ

- İBNİ HALDUN ÜNİVERSİTESİ
- İSTANBUL ŞEHİR ÜNİVERSİTESİ
- İSTANBUL AYDIN ÜNİVERSİTESİ
- İSTEK VAKFI OKULLARI
- DOĖA KOLEJİ OKULLARI 24 ŞUBE



- ACIBADEM HASTANESİ
- MEMORIAL HASTANELERİ
- BAYINDIR HASTANESİ
- ŞAFAK HASTANESİ

- T.C. ZİRAAT BANKASI ŞUBELERİ
- GARANTİ BANKASI ŞUBELERİ
- VAKIFBANK ŞUBELERİ
- İNGBANK GENEL MÜDÜRLÜK
- TÜRKİYE İŞ BANKASI ŞUBELERİ

- AQUA MANORS VİLLALARI
- SOMFY TÜRKİYE GENEL MÜDÜRLÜ BİNASI
- ÇİLEK MOBİLYA - 42 ŞUBESİ
- DÖRT MEVSİM ÇAMLIK SİTESİ - KAVACIK
- OPEL OTOMOTİV TUM PLAZALARI
- YİMTAŞ HONEYCOM PROJESİ
- HISTORIA AVM KELEŞOĖLU İNŞAAT

- GAP İNŞAAT
- KALYON İNŞAAT
- AND PROJE TEPE İNŞAAT
- S. LEVENT TORUNLAR İNŞAAT
- NİDA İNŞAAT
- CENGİZ İNŞAAT
- SURYAPI PROJELERİ
- MAKRO İNŞAAT
- EKİNCİLER İNŞAAT
- HALDIZ İNŞAAT
- ORTADOĖU İNŞAAT
- EGE YAPI PROJELERİ
- FER YAPI PROJELERİ

- BORUSAN HOLDİNG MERKEZİ
- AVRUPA KONUTLARI PROJELERİ
- DANONE SA GENEL MÜDÜRLÜK
- AKMERKEZ RESIDENCE
- KEMER COUNTRY GÖL EVLERİ
- ESAS HOLDİNG PEGASUS
- KADOİL GENEL MERKEZ OFİSLER

- MADO
- SİMİT SARAYI
- DİVAN CAFE
- TCHIBO
- HAPPY MOONS

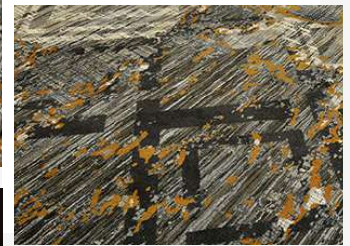
burcu flooring





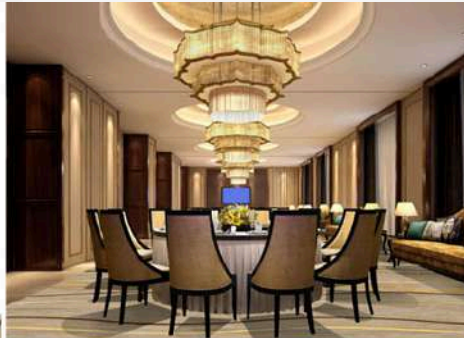
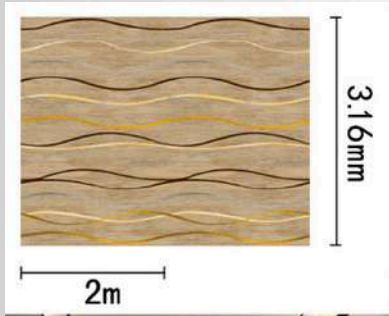
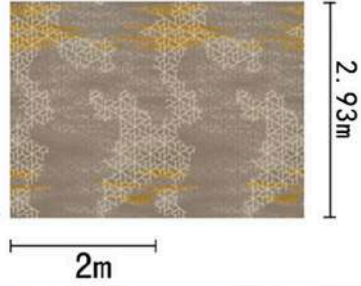
HOTEL CARPETS

Superior Performance and Natural Resilience
100 % Polyamide



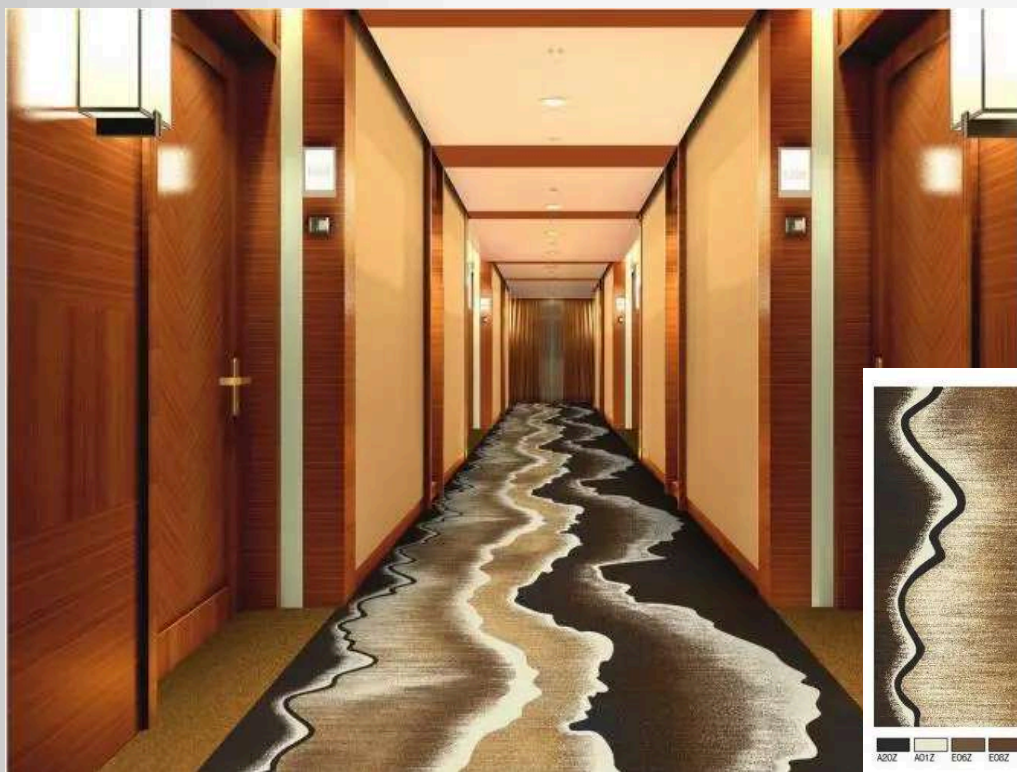


HOTEL CARPETS





HOTEL CARPETS





CUT PILE PRINTED CARPET TECHNICAL SPECIFICATIONS

800 gr/m2 Cut Pile Printed Ö Z E L L İ K L E R / S P E C I F I C A T I O N S

Ürün Cinsi	Carpet Type	800 gr/m2 Cut Pile Printed
Kullanım Amacı	Intendent Use	Wall to Wall or Contract Carpet
Üretim Cinsi	Production Process	Heavy Traffic
Dokuma Türü	Gauge	Chromojet™ Printed
Hav Malzemesi	Pile Material	1 / 10 Inch, Cut Pile
Hav Yüksekliği (tolerance +/- %5)	Pile Height	% 100 Polyamide 6 (nylon)
Toplam Yükseklik (tolerance +/- %5)	Total Height with Felt Back	5.0 mm (finish, +/- %5)
Dokuma Sıklığı (tolerance +/- %5)	Stitches Per 10 cm	7,9 mm (finish, +/- %5)
İlmeç Adedi (tolerance +/- %5)	Tufts Per sqm	40 stitches / 10cm (+/- %5)
Hav Ağırlığı (tolerance +/- %5)	Pile Weight	157,200 tufts / sqm (+/- %5)
Toplam Ağırlık (Felt Back)	Total Weight with Felt Back	800 gr / sqm (+/- %5)
Birinci Taban	Primary Backing	2,020 gr/sqm (+/- %5)
İkinci Taban	Secondary Backing	Woven Polypropylene
Bitmiş Ürün Eni (tolerance ± 1 cm)	Finish Width	240 gr/m2 Felt Back
		4.00 m and/or Runner Size (± 1 cm)

1000 gr/m2 Cut Pile Printed Ö Z E L L İ K L E R / S P E C I F I C A T I O N S

Ürün Cinsi	Carpet Type	Wall to Wall Contract Carpet
Kullanım Amacı	Intendent Use	Heavy Trafic
Üretim Cinsi	Production Process	Tufted and Chromojet™ Printed
Dokuma Türü	Gauge	1 / 10 Inch Cut Pile
Hav Malzemesi	Pile Material	% 100 Polyamide 6 (nylon)
Hav Yüksekliği (tolerance +/- %5)	Pile Height	5.5 mm (finish, +/- %5)
Toplam Yükseklik (tolerance +/- %5)	Total Height with Felt Back	8.2 mm (finish, +/- %5)
Dokuma Sıklığı (tolerance +/- %5)	Stitches Per 10 cm	48 stitches / 10cm (+/- %5)
İlmeç Adedi (tolerance +/- %5)	Tufts Per sqm	188,640 tufts / sqm (+/- %5)
Hav Ağırlığı (tolerance +/- %5)	Pile Weight	1,000 gr / sqm (+/- %5)
Toplam Ağırlık (Felt Back)	Total Weight with Felt Back	2,220 gr/sqm (+/- %5)
Birinci Taban	Primary Backing	Woven Polypropylene
İkinci Taban	Secondary Backing	240 Felt Back
Bitmiş Ürün Eni (tolerance ± 1 cm)	Finish Width	4.00 m and/or Runner Size (± 1 cm)

Burcu HALI ürünlerine ait teknik özelliklerde önceden ilan etmeksizin değişiklik yapabilir.

Burcu CARPET has right to make changing on the technical specifications of this products without any prior notice.



CUT PILE PRINTED CARPET TECHNICAL SPECIFICATIONS

1200 gr/m2 Cut Pile Printed

Ö Z E L L İ K L E R / S P E C I F I C A T I O N S

Ürün Cinsi	Carpet Type	Wall to Wall or Contract Carpet
Kullanım Amacı	Intendent Use	Heavy Traffic
Üretim Cinsi	Production Process	Chromojet™ Printed
Dokuma Türü	Gauge	1 / 10 Inch, Cut Pile
Hav Malzemesi	Pile Material	% 100 Polyamide 6 (nylon)
Hav Yüksekliği (tolerance +/- %5)	Pile Height	6.5 mm (finish, +/- %5)
Toplam Yükseklik (tolerance +/- %5)	Total Height with Felt Back	9.0 mm (finish, +/- %5)
Dokuma Sıklığı (tolerance +/- %5)	Stitches Per 10 cm	52 stitches / 10cm (+/- %5)
İlmeç Adedi (tolerance +/- %5)	Tufts Per sqm	204,360 tufts / sqm (+/- %5)
Hav Ağırlığı (tolerance +/- %5)	Pile Weight	1,200 gr / sqm (+/- %5)
Toplam Ağırlık (Felt Back)	Total Weight with Felt Back	2,420 gr/sqm (+/- %5)
Birinci Taban	Primary Backing	Woven Polypropylene
İkinci Taban	Secondary Backing	240 gr/m2 Felt Back
Bitmiş Ürün Eni (tolerance ± 1 cm)	Finish Width	4.00 m and/or Runner Size (± 1 cm)

1400 gr/m2 Cut Pile Printed

Ö Z E L L İ K L E R / S P E C I F I C A T I O N S

Ürün Cinsi	Carpet Type	Wall to Wall or Contract Carpet
Kullanım Amacı	Intendent Use	Heavy Traffic
Üretim Cinsi	Production Process	Chromojet™ Printed
Dokuma Türü	Gauge	1 / 10 Inch, Cut Pile
Hav Malzemesi	Pile Material	% 100 Polyamide 6 (nylon)
Hav Yüksekliği (tolerance +/- %5)	Pile Height	8.0 mm (finish, +/- %5)
Toplam Yükseklik (tolerance +/- %5)	Total Height with Felt Back	10,5 mm (finish, +/- %5)
Dokuma Sıklığı (tolerance +/- %5)	Stitches Per 10 cm	51 stitches / 10cm (+/- %5)
İlmeç Adedi (tolerance +/- %5)	Tufts Per sqm	200,430 tufts / sqm (+/- %5)
Hav Ağırlığı (tolerance +/- %5)	Pile Weight	1,400 gr / sqm (+/- %5)
Toplam Ağırlık (Felt Back)	Total Weight with Felt Back	2620 gr/sqm (+/- %5)
Birinci Taban	Primary Backing	Woven Polypropylene
İkinci Taban	Secondary Backing	240 Felt Back
Bitmiş Ürün Eni (tolerance ± 1 cm)	Finish Width	4.00 m and/or Runner Size (± 1 cm)

Burcu HALI ürünlerine ait teknik özelliklerde önceden ilan etmeksizin değişiklik yapabilir.

Burcu CARPET has right to make changing on the technical specifications of this products without any prior notice.



AXMINSTER CARPET

Color your space. To contact us today, all you need to do is choose the carpet for you with our expert help.





AXMINSTER CARPET





AXMINSTER CARPET





AXMINSTER CARPET PROJECT



Axminster carpets, which are a symbol of luxury, elegance and quality, are used in a wide range of 5-star hotels from rooms to corridors, from casinos to public places; palaces and congress centers and theater-conference halls are also widely used in areas where there is extra heavy foot traffic.



Axminster Carpets, which are produced with an extra reinforced yarn structure against contamination and stain in addition to their non-flammable property, retain their beauty from the first day they are woven for many years.





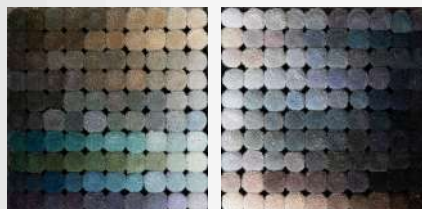
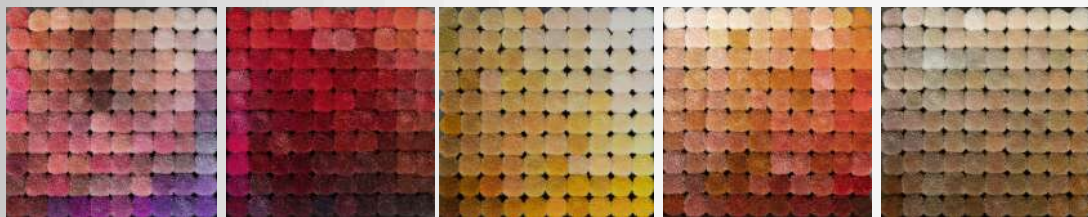
THE ART OF PATTERNS





AXMINSTER CARPET TECHNICAL SPECIFICATIONS

QUALITY	WEFT LBS	WEFT Gr/m2	PILE Gr/m2	WARP Gr/m2	LATEX Gr/m2	TOTAL WEIGHT Gr/m2	
7X6 7mm (27.6x23.6)	16/2	787 gr/m2	890 gr/m2	140	44	1860 gr/m2	ROOMS
7X7 7mm (27.6X27.6)	24/1	690 gr/m2	1040 gr/m2	140	44	1914 gr/m2	ROOMS
7x8 7mm (27.6x31.5)	24/1	794 gr/m2	1186 gr/m2	140	40	2160 gr/m2	ROOMS
7x9 7mm (27.6x35.4)	16/1	600 gr/m2	1335 gr/m2	140	40	2115 gr/m2	LOBBY
7X10 7mm (27.6x39.3)	16/1	660 gr/m2	1482 gr/m2	140	40	2322 gr/m2	RESTAURANT
7X10 10mm (27.6x39.3)	16/1	660 gr/m2	1916 gr/m2	140	40	2756 gr/m2	BAR
7X11 7mm (27.6x43.3)	16/1	721 gr/m2	1631 gr/m2	140	40	2532 gr/m2	KING SUIT-YACHT-BEDROOM
7X11 12mm (27.6x43.3)	16/1	721 gr/m2	2430 gr/m2	140	40	3331 gr/m2	KING SUIT-YACHT-BEDROOM





CARPET RUBBER UNDERLAY



it reduces the sound transmission on the floor and makes the carpet on top look better and last longer.

Benefits

- Provides insulation and noise insulation to floors
- It offers superior support while improving the carpet appearance and extending the carpet life
- Inhibits the growth of bacteria that cause mold, mildew and odor
- Prevents spills from penetrating into the subfloor
- Recommended as the "Best Choice" by Radiant Professionals Alliance
- 100% recyclable at the end of its service life



Recommended

- Guest room
- Built-In Room
- Dorm room
- Hospitality
- Senior Life
- Campus Housing



HAND-TUFTED RUGS

Color your space. To contact us today, all you need to do is choose the carpet for you with our expert help.





HAND-TUFTED RUGS





HAND-TUFTED RUGS



- There are no limits on shape or size.
- Unlimited color options.
- Unlimited custom design possibilities.
- Complex detailed designs.
- A wide range of surface options and levels.
- A wide variety of surfaces.
- There are no seams in the final product.
- Durability.
- Longevity



HAND TUFTED RUG SPECIFICATIONS HT650

Quality	6.5 Pound
Yarn Content	100% New Zealand Wool
Yarn Count	380 Tex, 1/80s Dewsbury
Yarn Twist/10cm	130 twists
Ply Twist/10cm	11.4 twists
Dyeing Method	Skein
Total Weight	5100 gm/sq. m 150.4 oz/sq. yard
Gross Yarn Weight	3550 gm/sq. m 104.7 oz/sq. yard
Pile Height	13-14mm (can vary depending on design)
Number of Rows/10cm	24
Number of Stitches/10cm	27
Number of Ends/Insertion	4
Primary Backing	Basket Weave 60% Cotton 40% Polyester 26x26 per inch Width: 620cm 244 inches Weight: 326 gm/sq. m 9.6 oz/sq. yard
Secondary Backing	Leno Weave Warp – 100% Cotton Weft 90% Cotton 10% Polyester 12x6 per inch Width: 300cm 118.1 inches Weight: 61 gm/sq. m 1.8 oz/sq. yard
Latex	Natural Rubber
Mothproofing	Mystox CMP

HAND TUFTED RUG SPECIFICATIONS HT550

Quality	5.5 Pound Yarn
Content	80% Wool 20 % PA
Yarn Count	380 Tex, 1/80s Dewsbury
Yarn Twist/10cm	130 twists
Ply Twist/10cm	11.4 twists
Dyeing Method	Skein
Total Weight	4550 gm/sq. m 134.2 oz/sq. yard
Gross Yarn Weight	3300 gm/sq. m 88.5 oz/sq. yard
Pile Height	13-14 mm (can vary depending on design)
Number of Rows/10cm	22
Number of Stitches/10cm	24
Number of Ends/Insertion	4
Primary Backing	Basket Weave 60% Cotton 40% Polyester 26x26 per inch Width: 620cm 244 inches Weight: 326 gm/sq. m 9.6 oz/sq. yard
Secondary Backing	Leno Weave Warp – 100% Cotton Weft – 90% Cotton 10% Polyester 12x6 per inch Width: 300cm 118.1 inches Weight: 61 gm/sq. m 1.8 oz/sq. yard
Latex	Natural Rubber
Mothproofing	Mystox CMP



HAND TUFTED RUG SPECIFICATIONS HT450

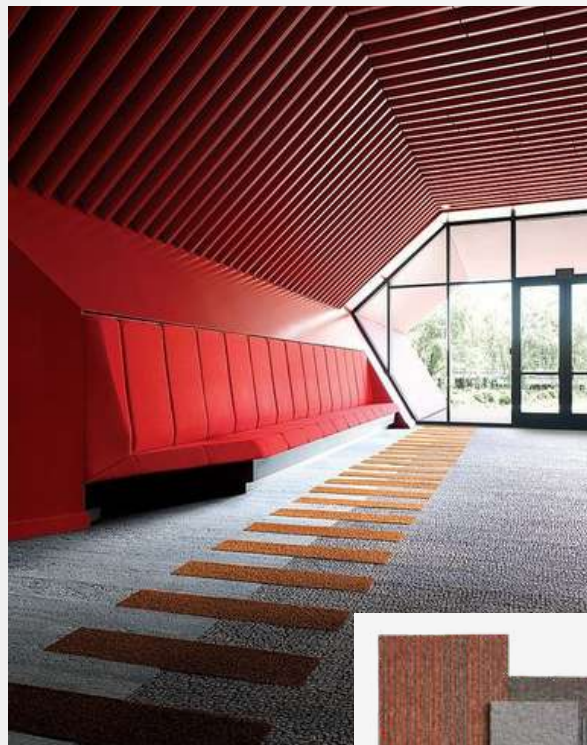
Quality	4.5 Pound
Yarn Content	100% Wool
Yarn Count	380 Tex, 1/80s Dewsbury
Yarn Twist/10cm	130 twists
Ply Twist/10cm	11.4 twists
Dyeing Method	Skein
Total Weight	4100 gm/sq. m 120.9 oz/sq. yard
Gross Yarn Weight	2450 gm/sq. m 72.3 oz/sq. yard
Pile Height	9-10mm (can vary depending on design)
Number of Rows/10cm	20
Number of Stitches/10cm	22
Number of Ends/Insertion	4
Primary Backing	Basket Weave 60% Cotton 40% Polyester 26x26 per inch Width: 620cm 244 inches Weight: 326 gm/sq. m 9.6 oz/sq. yard
Secondary Backing	Leno Weave Warp - 100% Cotton Weft - 90% Cotton 10% Polyester 12x6 per inch Width: 300cm 118.1 inches Weight: 61 gm/sq. m 1.8 oz/sq. yard
Latex	Natural Rubber
Mothproofing	Mystox CMP



CARPET TILE



Especially Tile Carpets used as floor covering material of Commercial spaces are used today due to the variety of Quality, Color and Pattern ARCHITECTURAL PROJECTS have also come to the fore as the most preferred Floor Covering Material.





CARPET TILE PROJECT



Carpet tile is usually applied on raised floors, as well as concrete surfaces corrected with a self-leveling handle can be easily applied. The most important advantage of carpet tile flooring is that certain desired parts of the carpet can be disassembled and replaced with spot intervention when necessary, rather than as a whole.

In addition, special patterns can be created on the floor using different colors and different pattern combinations. available in sizes 50*50 cm and 25*100 cm An important advantage of tile carpets is that they are more economical in total by significantly reducing the rate of waste.

It is easy to transport and assemble. It is easy to transport when re-transport is required. It has the advantage that it can be removed from its place and used in other places.

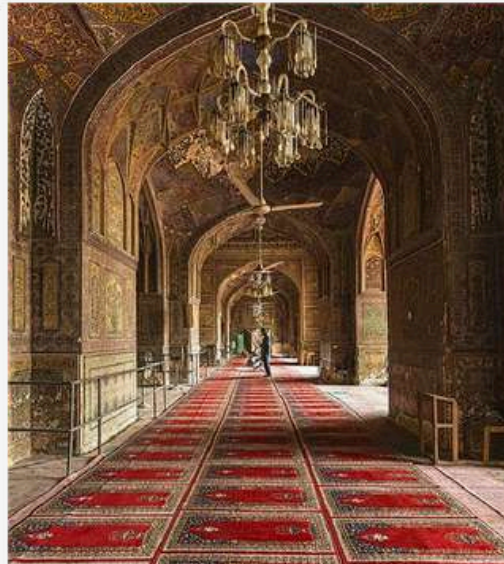
Worn or excessively soiled sections can be easily replaced with new ones. There are unlimited pattern, motif alternatives and it is easy to clean. It is a product that has a lot of human traffic, requires health compliance, does not want to fade color, requires little maintenance, does not wear, absorbs sound and noise, anti-static, anti-allergic, does not slip.





MOSQUE CARPET

The mosque carpet should have a color and pattern that will support the architectural structure inside the mosque and make it look richer.





Since the mosque carpet is under heavy foot traffic, the carpet should have features such as long service life, wear-resistant, not being deformed immediately.

If it does not have these characteristics, the carpet will become unusable in a short time, but it will cause financial waste and people to deal with tasks that will tire people out, such as re-coating carpets.

One of the features that should be on the carpet is that the carpet does thermal insulation.

This feature in the carpet is due to the heating energies (natural gas, air conditioning, etc.) causes minimal utilization and contributes to overall energy savings.





TECHNICAL CHARACTERISTICS OF ACRYLIC CARPET

Pile Height	14 mm
Total Height	16 mm
Total Weight	4.500 gr / m ²
Pile Material	%100 Acrylic
Tapan Rope	Imported Jute
Number of Loops	1.008.000
Light Fastness	% 6
Sweating	% 5
Friction	% 5
Evaporation	% 6
Sun Fading	% 6
Method of Use	Suitable for Extra Intensive Use
Warranty Period	2 Years
Average Lifetime	20-25 Years

Our acrylic mosque carpet products have non-flammable, anti-bacterial and anti-static properties. Our mosque carpet products are hygienic, do not smell, do not fade colors, do not keep moths.